

GOVERNMENT DEGREE COLLEGE FOR WOMEN, ADILABAD
TELANGANA STATE

Accredited by NAAC With 'B' Grade

Sri.K.Santhosh Kumar
Principal
Cell: 9440873778

Website:<http://gdets.cgg.gov.in/adilabadwomen.edu>
Email:gdcwomens.adilabad.jkc@gmail.com
Phone No: 08732-226370



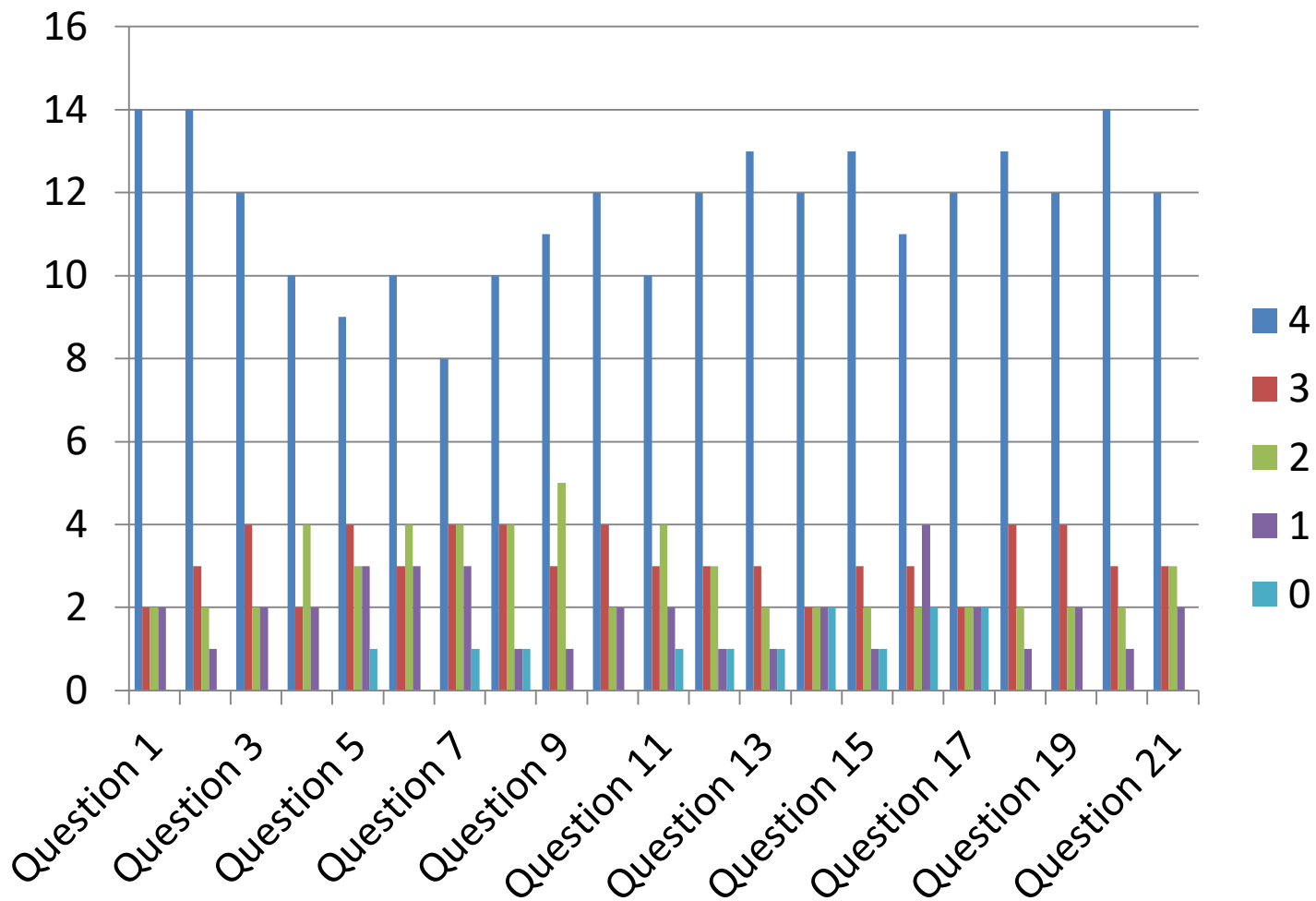
Student Satisfaction Survey 2018-2019

Declaration

Govt. Degree College for women, Adilabad conducted the student satisfaction survey in the prescribed format and analyzed the survey. In the survey student opinion about performance of teacher and overall impression about the teacher is collected. Student's opinion about the institution and facilities available in the institution and any opinion about the further improvement are also collected.

Student's opinion about the all the teachers and institution is analyzed and a report is made for further improvement. Hence it is declared that student satisfaction survey is conducted in the institution.

Ushma
PRINCIPAL
Principal
Govt. Degree College for Women
Dist: Adilabad.



National Assessment and Accreditation Council (NAAC)
Student Satisfaction Survey

Key Indicator - 2.7.1

Under Criterion II of Teaching - Learning and Evaluation

049-19-1119

Guidelines for Students

NAAC (National Assessment and accreditation council) is conducting a Student Satisfaction Survey regarding Teaching - Learning and Evaluation, which will help to upgrade the quality in higher education. A student will have to respond to all the questions given in the following format with her/his sincere effort and thought. Her/his identity will not be revealed.

A) Please confirm this is the first and only time you answer this survey.

a) Yes { } b) NO { }

B) Age: 19 C) College Name: Govt Degree collegewo. Adb

D) Gender: a) Female { } b) Male { } c) Transgender { }

E) What degree program are you pursuing now?

a) Bachelor's { } b) Master's { }
c) MPhil { } d) Doctorate { } e) Other { }

F) What subject area are you currently pursuing?

a) Arts { } b) Commerce { }
c) Science { } d) Professional { } e) Other { }

Instructions to fill the questionnaire

- All questions should be compulsorily attempted.
- All questions should be compulsorily attempted.
- The response to the qualitative question no. 21 is student's opportunity to give suggestion impoverishment she/he can also maintain weaknesses of the institute here. (Kindly restrict your response to-teaching learning process only)

Criterion II - Teaching-Learning and Evaluation

Student Satisfaction Survey on Teaching Learning Process

Following are questions for online student satisfaction survey regarding teaching learning process.

1. How much of the syllabus was covered in the class?

- 4-85 to 100%
- 3-70 to 84%
- 2-55 to 69%
- 1-30 to 54%
- 0-Below 30%

2. How well did the teachers prepare for the classes?

- 4-Thoroughly
- 3-Satisfactorily
- 2-Poorly
- 1-Indifferently
- 0-Won't teach at all

3. How well were the teachers able to communicate?

- 4-Always effective
- 3 - Sometimes effective
- 2 - Just satisfactorily
- 1- Generally ineffective
- 0- Very poor communication

4. The teacher's approach to teaching can best be described as

- 4- Excellent
- 3- Very good
- 2- Good
- 1 - Fair
- 0- Poor

fairness of the internal evaluation process by the teachers.

- 4- Always fair
- 3- Usually fair
- 2- Sometimes unfair
- 1 - Usually unfair
- 0- Unfair

6. Was your performance in assignments discussed with you?

- 4- Every time
- 3+ Usually
- 2 - Occasionally/Sometimes
- 1 - Rarely
- 0- Never

7. The institute takes active interest in promoting internship, student exchange, field visit opportunities for students.

- 4- Regularly
- 3- Often
- 2- Sometimes
- 1 - Rarely
- 0- Never

8. The teaching and mentoring process in your institution facilitates you in cognitive, social and emotional youth.

- 4- Always effective
- 3 - Sometimes effective
- 2 - Just satisfactorily
- 1- Generally ineffective
- 0- Very poor communication

9. The institution provides multiple opportunities to learn and grow.

- 4- Strongly agree
- 3- Agree
- 2- Neutral
- 1 - Disagree
- 0- Strongly disagree

Teachers inform you about your expected competencies, course outcomes programme outcomes.

~~4~~ Every time

3 - Usually

2 - Occasionally/Sometimes

1 - Rarely

0 - Never

11. Your mentor does a necessary follow-up with an assigned task to you.

~~4~~ Every time

3 - Usually

2 - Occasionally/Sometimes

1 - Rarely

0 - I don't have a mentor

12. The teachers illustrate the concepts through examples and applications.

~~4~~ Every time

3 - Usually

2 - Occasionally/Sometimes

1 - Rarely

0 - Never

13. The teachers identify your strengths and encourage you with providing right level of challenges.

~~4~~ Fully

3 - Reasonably

2 - Partially

1 - Slightly

0 - Unable to

14. Teachers are able to identify your weaknesses and help you to overcome them.

~~4~~ Every time

3 - Usually

2 - Occasionally/Sometimes

1 - Rarely

0 - Never

The institution makes effort to engage students in the monitoring, review and continuous quality improvement of the teaching learning process.

- 4- Strongly Agree
- 3- Agree
- 2 - Neutral
- 1 - Disagree
- 0 - Strongly disagree

16. The institute/ teachers use student centric methods, such as experiential learning, participative learning & problem solving methodologies for enhancing learning experience.

- 4- To a great extent
- 3 -Moderate
- 2- Some what
- 1 - Very little
- 0-Not at all

17. Teachers encourage you to participate in extracurricular activities.

- 4- Strongly Agree
- 3- Agree
- 2 - Neutral
- 1 - Disagree
- 0 - Strongly disagree

18. Efforts are made by the institute/ teachers to inculcate soft skills, life skills and employability skills to make you ready for the world of work.

- 4- To a extent
- 3 -Moderate
- 2- Some what
- 1 - Very little
- 0-Not at all

19. What percentage of teachers use ICT tools such as LCD projector, Multimedia, etc. while teaching.

- 4 - Above 90%
- 3- 70 - 89%
- 2-50 -69%
- 1-30 -49%
- 0 - Below 29%

7. The overall quality of teaching-learning process in your institute is very good.

~~4-Strongly agree~~

3 - Agree

2 - Neutral

1 - Disagree

0 - Strongly disagree

21. Give three observation / suggestions to improve the overall teaching-learning experience in your institution.

~~a) provide mid day meal~~

~~b) provide computer labs for 24 hours for E-learning~~

~~c) Provide gyms for 24 hours.~~