

**Government Degree College, Patancheru,
District: Sangareddy, Telangana State**

Internal Quality Assurance Cell (IQAC)

Analysis of Student Feedback on Teacher

Student feedback on teacher is taken from students to evaluate the performance of teacher in respect of curriculum transaction with the objective to identify the gaps and improve the quality of transaction. The feedback is collected once in a year generally towards end of the even semester of the academic year. Feedback is collected from sample of students randomly selected on the day of the collection in the form of a response to a set of twenty queries on a five point scale ranging from poor to excellent. The questionnaire does not contain the details of student so as to ensure that student shall provide his/her response without any fear and favor.

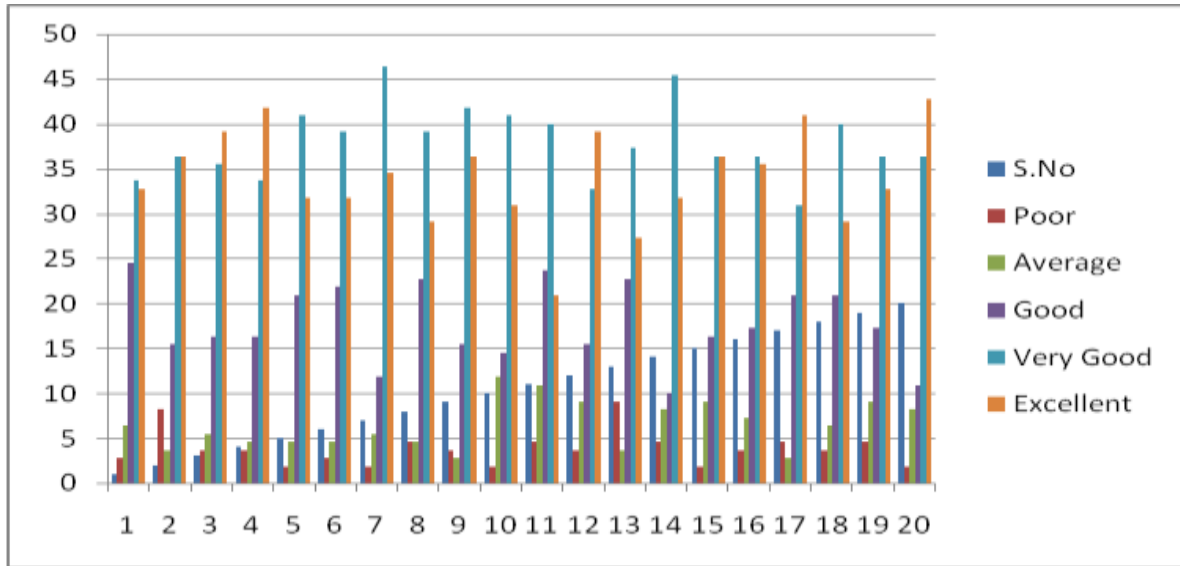
The questionnaire consists of twenty queries on various aspects relating to curriculum transaction by teacher encompassing teaching, learning and evaluation activities. IQAC collected and analyzed provided inputs to the teachers. This process enables teacher to objectively look into each and every aspect of the whole process of curriculum transaction and improvise it.

The feedback analysis of the academic year 2016-17 is as follows:

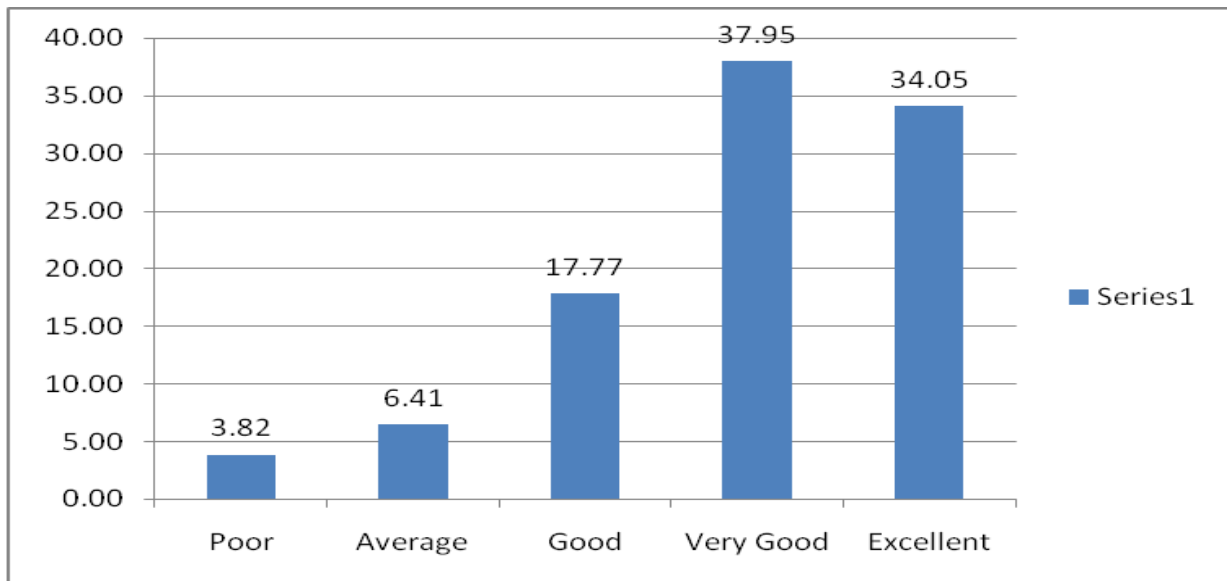
S.No	Query	Percentage				
		Poor	Average	Good	Very Good	Excellent
1	Efforts to effectively cover 100% syllabus	2.73	6.36	24.55	33.64	32.73
2	The interest generated in the students while teaching in the class room	8.18	3.64	15.45	36.36	36.36
3	Clarity of expression while teaching the topic/lesson	3.64	5.45	16.36	35.45	39.09
4	Depth of subject content explained	3.64	4.55	16.36	33.64	41.82
5	Level of latest developments in the subject taught	1.82	4.55	20.91	40.91	31.82
6	Use of other methods of teaching like class seminar question answer group discussion etc., in the class room	2.73	4.55	21.82	39.09	31.82
7	Encouraging questions in the topic in the class and clearing doubts	1.82	5.45	11.82	46.36	34.55
8	Use of teaching models and teaching aids in the class room	4.55	4.55	22.73	39.09	29.09
9	Encouraging and supervising the students for study projects	3.64	2.73	15.45	41.82	36.36

S.No	Query	Poor	Average	Good	Very Good	Excellent
10	Aptitude shown in arranging field visits, invited lectures etc., in the subject	1.82	11.82	14.55	40.91	30.91
11	Encouraging and guiding students in reading library (subject and general) books and using internet	4.55	10.91	23.64	40.00	20.91
12	Encouraging and guiding students in giving class seminars	3.64	9.09	15.45	32.73	39.09
13	Regularity and seriousness in valuing the answer scripts of monthly tests and discussing the same with the students	9.09	3.64	22.73	37.27	27.27
14	Remedial coaching and efforts made in preparing the students for university examinations	4.55	8.18	10.00	45.45	31.82
15	Punctuality to the class	1.82	9.09	16.36	36.36	36.36
16	Enthusiasm shown to encourage and guide students in extracurricular activities like cultural, community services nation building etc.	3.64	7.27	17.27	36.36	35.45
17	Counseling and career guidance	4.55	2.73	20.91	30.91	40.91
18	Accessibility of the lecturer outside the classroom for academic interaction	3.64	6.36	20.91	40.00	29.09
19	Personal care and affection while dealing with individual students and helping students	4.55	9.09	17.27	36.36	32.73
20	Overall opinion on the lecturer	1.82	8.18	10.91	36.36	42.73
	Percentage Average	3.82	6.41	17.77	37.95	34.05

Query-wise Response of Students



Averages of Student Response:



DISTRICT SANGAREDDY, TELANGANA STATE

Internal Quality Assurance Cell (IQAC) Analysis of Student Feedback on Teacher

Student feedback on teacher is taken from students to evaluate the performance of teacher in respect of curriculum transaction with the objective to identify the gaps and improve the quality of transaction. The feedback is collected once in a year generally towards end of the even semester of the academic year. Feedback is collected from sample of students randomly selected on the day of the collection in the form of a response to a set of twenty queries on a five point scale ranging from poor to excellent. The questionnaire does not contain the details of student so as to ensure that student shall provide his/her response without any fear and favor.

The questionnaire consists of twenty queries on various aspects relating to curriculum transaction by teacher encompassing teaching, learning and evaluation activities. IQAC collected and analyzed provided inputs to the teachers. This process enables teacher to objectively look into each and every aspect of the whole process of curriculum transaction and improvise it.

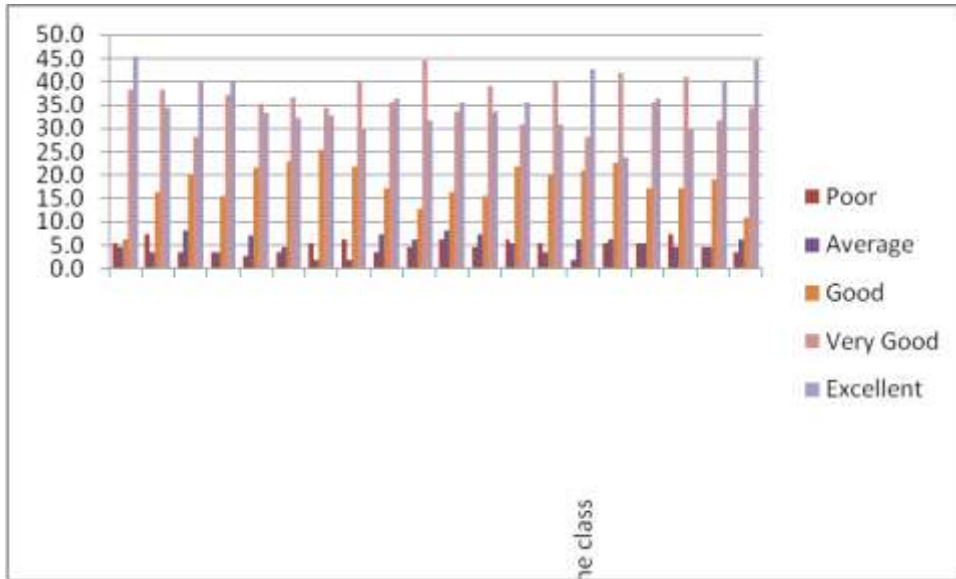
The feedback analysis of the academic year 2017-18 is as follows:

S.No	Query	Percentage				
		Poor	Average	Good	Very Good	Excellent
1	Efforts to effectively cover 100% syllabus	5.5	4.55	6.36	38.2	45.5
2	The interest generated in the students while teaching in the class room	7.3	3.64	16.36	38.2	34.5
3	Clarity of expression while teaching the topic/lesson	3.6	8.18	20.00	28.2	40.0
4	Depth of subject content explained	3.6	3.64	15.45	37.3	40.0
5	Level of latest developments in the subject taught	2.7	7.21	21.62	35.1	33.3
6	Use of other methods of teaching like class seminar question answer group discussion etc., in the class room	3.7	4.59	22.94	36.7	32.1
7	Encouraging questions in the topic in the class and clearing doubts	5.5	1.82	25.45	34.5	32.7
8	Use of teaching models and teaching aids in the class room	6.4	1.82	21.82	40.0	30.0

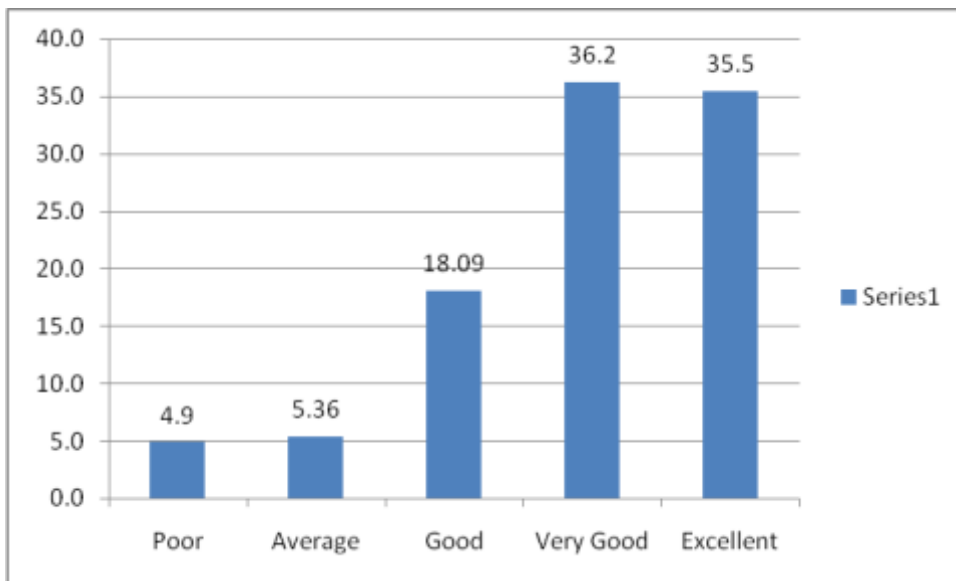
S.No	Query	Poor	Average	Good	Very Good	Excellent
------	-------	------	---------	------	-----------	-----------

9	Encouraging and supervising the students for study projects	3.6	7.27	17.27	35.5	36.4
10	Aptitude shown in arranging field visits, invited lectures etc., in the subject	4.5	6.36	12.73	44.5	31.8
11	Encouraging and guiding students in reading library (subject and general) books and using internet	6.4	8.18	16.36	33.6	35.5
12	Encouraging and guiding students in giving class seminars	4.5	7.27	15.45	39.1	33.6
13	Regularity and seriousness in valuing the answer scripts of monthly tests and discussing the same with the students	6.4	5.45	21.82	30.9	35.5
14	Remedial coaching and efforts made in preparing the students for university examinations	5.5	3.64	20.00	40.0	30.9
15	Punctuality to the class	1.8	6.36	20.91	28.2	42.7
16	Enthusiasm shown to encourage and guide students in extracurricular activities like cultural, community services nation building etc.	5.5	6.36	22.73	41.8	23.6
17	Counseling and career guidance	5.5	5.45	17.27	35.5	36.4
18	Accessibility of the lecturer outside the classroom for academic interaction	7.3	4.55	17.27	40.9	30.0
19	Personal care and affection while dealing with individual students and helping students	4.5	4.55	19.09	31.8	40.0
20	Overall opinion on the lecturer	3.6	6.36	10.91	34.5	44.5
	Grand Total	4.9	5.36	18.09	36.2	35.5

Query-wise Response of Students



Averages of Student Response:



**Government Degree College, Patancheru,
District: Sangareddy, Telangana State**

Internal Quality Assurance Cell (IQAC)

Analysis of Student Feedback on Teacher

Student feedback on teacher is taken from students to evaluate the performance of teacher in respect of curriculum transaction with the objective to identify the gaps and improve the quality of transaction. The feedback is collected once in a year generally towards end of the even semester of the academic year. Feedback is collected from sample of students randomly selected on the day of the collection in the form of a response to a set of twenty queries on a five point scale ranging from poor to excellent. The questionnaire does not contain the details of student so as to ensure that student shall provide his/her response without any fear and favor.

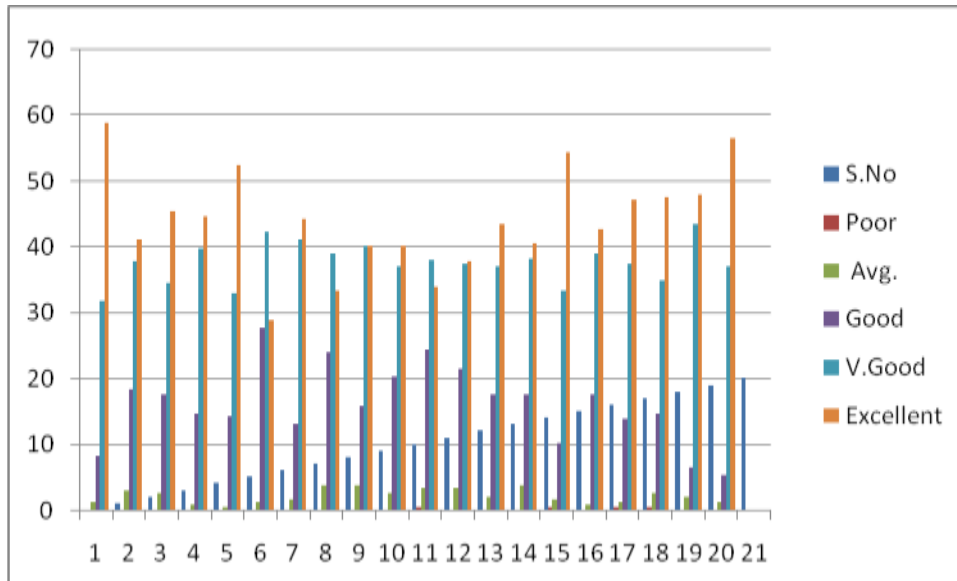
The questionnaire consists of twenty queries on various aspects relating to curriculum transaction by teacher encompassing teaching, learning and evaluation activities. IQAC collected and analyzed provided inputs to the teachers. This process enables teacher to objectively look into each and every aspect of the whole process of curriculum transaction and improvise it.

The feedback analysis of the academic year 2018-19 is as follows:

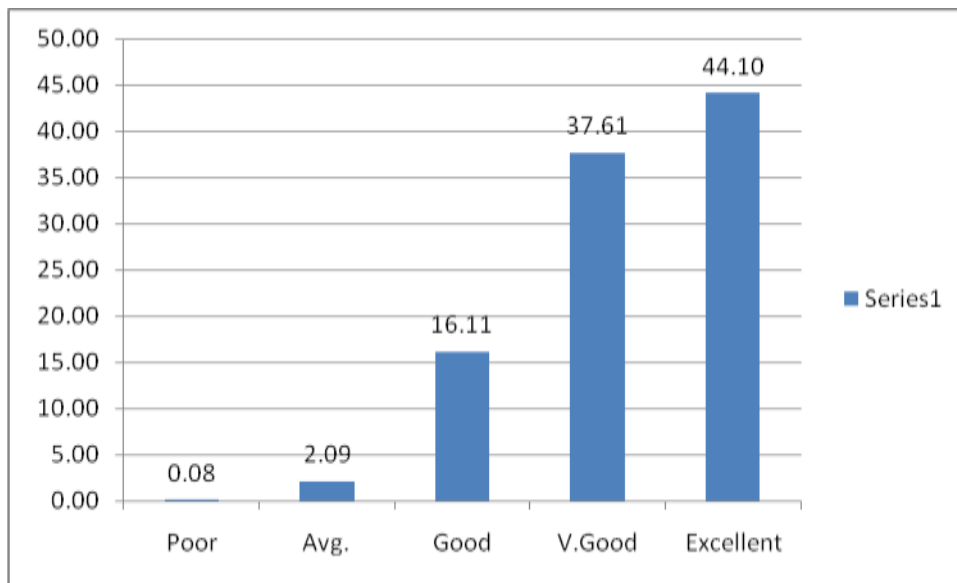
S.No	Query	Percentage				
		Poor	Avg.	Good	V. Good	Excellent
1	Efforts to effectively cover 100% syllabus	0.00	1.22	8.13	31.71	58.94
2	The interest generated in the students while teaching in the class room	0.00	2.85	18.29	37.80	41.06
3	Clarity of expression while teaching the topic/lesson	0.00	2.44	17.48	34.55	45.53
4	Depth of subject content explained	0.00	0.81	14.63	39.84	44.72
5	Level of latest developments in the subject taught	0.00	0.41	14.23	32.93	52.44
6	Use of other methods of teaching like class seminar question answer group discussion etc., in the class room	0.00	1.22	27.64	42.28	28.86
7	Encouraging questions in the topic in the class and clearing doubts	0.00	1.63	13.01	41.06	44.31
8	Use of teaching models and teaching aids in the class room	0.00	3.66	23.98	39.02	33.33
9	Encouraging and supervising the students for study projects	0.00	3.66	15.85	40.24	40.24

S.No	Query	Percentage				
		Poor	Avg.	Good	V. Good	Excellent
10	Aptitude shown in arranging field visits, invited lectures etc., in the subject	0.00	2.44	20.33	36.99	40.24
11	Encouraging and guiding students in reading library (subject and general) books and using internet	0.40	3.24	24.29	38.06	34.01
12	Encouraging and guiding students in giving class seminars	0.00	3.25	21.54	37.40	37.80
13	Regularity and seriousness in valuing the answer scripts of monthly tests and discussing the same with the students	0.00	2.03	17.48	36.99	43.50
14	Remedial coaching and efforts made in preparing the students for university examinations	0.00	3.66	17.48	38.21	40.65
15	Punctuality to the class	0.41	1.63	10.16	33.33	54.47
16	Enthusiasm shown to encourage and guide students in extracurricular activities like cultural, community services nation building etc.	0.00	0.81	17.48	39.02	42.68
17	Counseling and career guidance	0.41	1.22	13.82	37.40	47.15
18	Accessibility of the lecturer outside the classroom for academic interaction	0.41	2.44	14.63	34.96	47.56
19	Personal care and affection while dealing with individual students and helping students	0.00	2.03	6.50	43.50	47.97
20	Overall opinion on the lecturer	0.00	1.22	5.28	36.99	56.50
	Grand Total	0.08	2.09	16.11	37.61	44.10

Query-wise Response of Students



Averages of Student Response:



**GOVERNMENT DEGREE COLLEGE, PATANCHERU,
DISTRICT SANGAREDDY, TELANGANA STATE**

Internal Quality Assurance Cell (IQAC)

Providing Teacher-wise Feedback Analysis 2016-17:

As you are aware that the Internal Quality Assurance Cell (IQAC) has been established with the objective to institutionalize quality processes to sustain and enhance quality of education. IQAC is mandated to institutionalize quality processes keeping in view the criteria prescribed by National Assessment and Accreditation Council (NAAC). In pursuit of its responsibilities, IQAC takes feedback from students on teachers and analyses the feedback and provides inputs to the teachers.

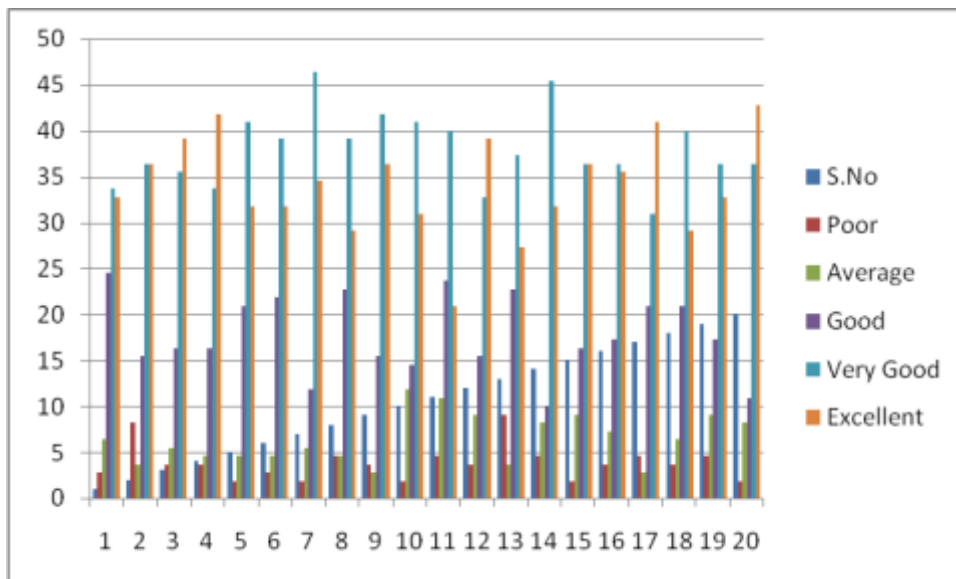
The student feedback for the feedback is obtained from the students. The feedback is taken in the form of student response to questionnaire of a five point scale ranging from poor to excellent. The questionnaire comprises twenty questions reflecting teacher performance in respect of various aspects of Teaching, Learning and Evaluation process.

AVERAGES OF QUERY-WISE RESPONSE FROM STUDENTS' FEEDBACK FOR THE YEAR 2016-17:

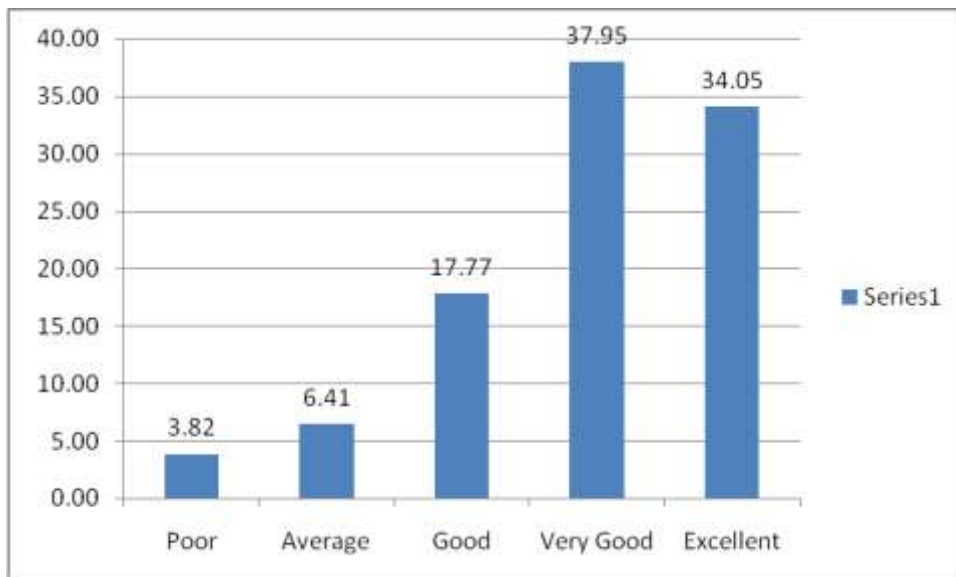
S.No	Query	Poor	Average	Good	Very Good	Excellent
1	Efforts to effectively cover 100% syllabus	2.73	6.36	24.55	33.64	32.73
2	The interest generated in the students while teaching in the class room	8.18	3.64	15.45	36.36	36.36
3	Clarity of expression while teaching the topic/lesson	3.64	5.45	16.36	35.45	39.09
4	Depth of subject content explained	3.64	4.55	16.36	33.64	41.82
5	Level of latest developments in the subject taught	1.82	4.55	20.91	40.91	31.82
6	Use of other methods of teaching like class seminar question answer group discussion etc., in the class room	2.73	4.55	21.82	39.09	31.82
7	Encouraging questions in the topic in the class and clearing doubts	1.82	5.45	11.82	46.36	34.55
8	Use of teaching models and teaching aids in the class room	4.55	4.55	22.73	39.09	29.09
9	Encouraging and supervising the students for study projects	3.64	2.73	15.45	41.82	36.36

S.No	Query	Poor	Average	Good	Very Good	Excellent
10	Aptitude shown in arranging field visits, invited lectures etc., in the subject	1.82	11.82	14.55	40.91	30.91
11	Encouraging and guiding students in reading library (subject and general) books and using internet	4.55	10.91	23.64	40.00	20.91
12	Encouraging and guiding students in giving class seminars	3.64	9.09	15.45	32.73	39.09
13	Regularity and seriousness in valuing the answer scripts of monthly tests and discussing the same with the students	9.09	3.64	22.73	37.27	27.27
14	Remedial coaching and efforts made in preparing the students for university examinations	4.55	8.18	10.00	45.45	31.82
15	Punctuality to the class	1.82	9.09	16.36	36.36	36.36
16	Enthusiasm shown to encourage and guide students in extracurricular activities like cultural, community services nation building etc.	3.64	7.27	17.27	36.36	35.45
17	Counseling and career guidance	4.55	2.73	20.91	30.91	40.91
18	Accessibility of the lecturer outside the classroom for academic interaction	3.64	6.36	20.91	40.00	29.09
19	Personal care and affection while dealing with individual students and helping students	4.55	9.09	17.27	36.36	32.73
20	Overall opinion on the lecturer	1.82	8.18	10.91	36.36	42.73
	Percentage Average	3.82	6.41	17.77	37.95	34.05

Query-wise Response of Students



Averages of Student Response:



Teacher-wise feedback analysis is herewith provided to the teachers in a separate sheet. Teachers are requested to take note of the feedback, identify gaps if any and initiate appropriate steps to improve quality of Teaching Learning Process.

S.No	Name of the Lecturer	Designation	Signature
1	T.Patanjali	Asso. Prof of Telugu	
2	P.Krishna Murthy	Asso. Prof of Commerce	
3	R.Swarnalatha	Asst. Prof of Botany	
4	M.Praveena	Asst. Prof of English	
5	M.Pranitha	Asst. Prof of Zoology	
6	S.Krishnaiah	Asst. Prof of History	
7	K.Srinivas	Asst. Prof of Economics	
8	N.Saidamma	Lecturer in Political Science	
9	J.Sravan Kumar	Lecturer in Mathematics	
10	N.Himaja	Lecturer in Chemistry	
11	A.Sumalatha	Lecturer in Physics	

**GOVERNMENT DEGREE COLLEGE, PATANCHERU,
DISTRICT SANGAREDDY, TELANGANA STATE**

Internal Quality Assurance Cell (IQAC)

Providing Teacher-wise Feedback Analysis 2017-18:

As you are aware that the Internal Quality Assurance Cell (IQAC) has been established with the objective to institutionalize quality processes to sustain and enhance quality of education. IQAC is mandated to institutionalize quality processes keeping in view the criteria prescribed by National Assessment and Accreditation Council (NAAC). In pursuit of its responsibilities, IQAC takes feedback from students on teachers and analyses the feedback and provides inputs to the teachers.

The student feedback for the feedback is obtained from the students. The feedback is taken in the form of student response to questionnaire of a five point scale ranging from poor to excellent. The questionnaire comprises twenty questions reflecting teacher performance in respect of various aspects of Teaching, Learning and Evaluation process.

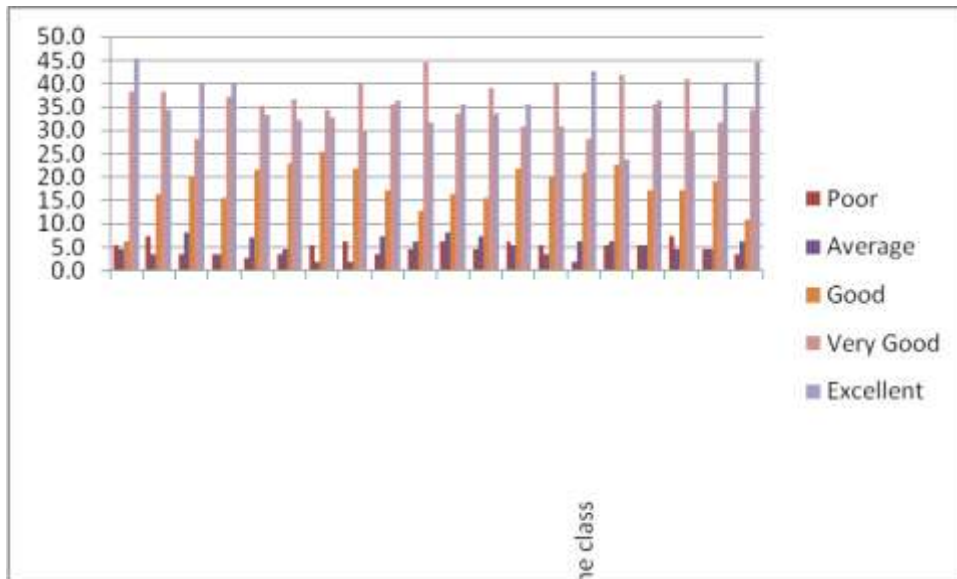
AVERAGES OF QUERY-WISE RESPONSE FROM STUDENTS' FEEDBACK FOR THE YEAR 2017-18:

S.No	Query	Poor	Average	Good	Very Good	Excellent
1	Efforts to effectively cover 100% syllabus	5.5	4.55	6.36	38.2	45.5
2	The interest generated in the students while teaching in the class room	7.3	3.64	16.36	38.2	34.5
3	Clarity of expression while teaching the topic/lesson	3.6	8.18	20.00	28.2	40.0
4	Depth of subject content explained	3.6	3.64	15.45	37.3	40.0
5	Level of latest developments in the subject taught	2.7	7.21	21.62	35.1	33.3
6	Use of other methods of teaching like class seminar question answer group discussion etc., in the class room	3.7	4.59	22.94	36.7	32.1
7	Encouraging questions in the topic in the class and clearing doubts	5.5	1.82	25.45	34.5	32.7
8	Use of teaching models and teaching aids in the class room	6.4	1.82	21.82	40.0	30.0

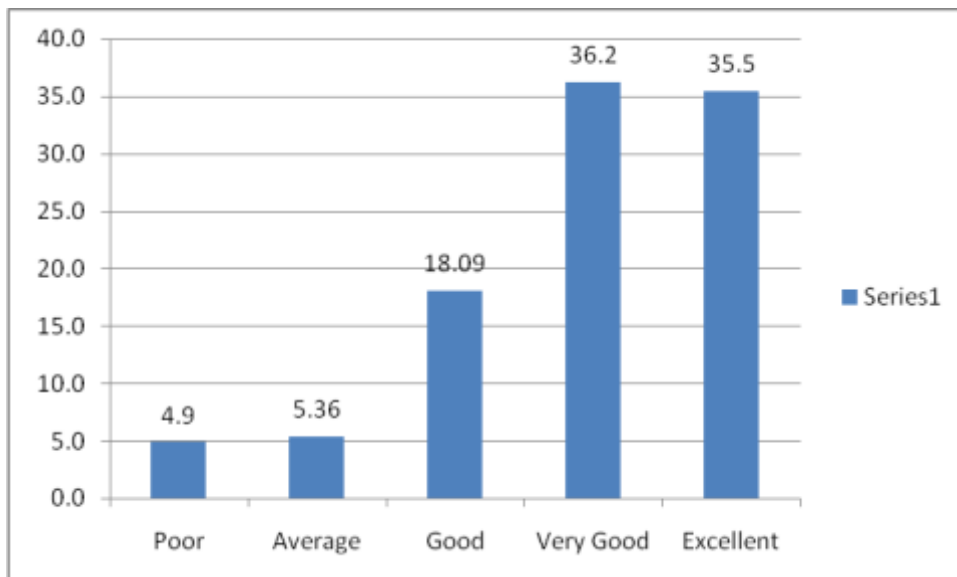
S.No	Query	Poor	Average	Good	Very Good	Excellent
------	-------	------	---------	------	-----------	-----------

9	Encouraging and supervising the students for study projects	3.6	7.27	17.27	35.5	36.4
10	Aptitude shown in arranging field visits, invited lectures etc., in the subject	4.5	6.36	12.73	44.5	31.8
11	Encouraging and guiding students in reading library (subject and general) books and using internet	6.4	8.18	16.36	33.6	35.5
12	Encouraging and guiding students in giving class seminars	4.5	7.27	15.45	39.1	33.6
13	Regularity and seriousness in valuing the answer scripts of monthly tests and discussing the same with the students	6.4	5.45	21.82	30.9	35.5
14	Remedial coaching and efforts made in preparing the students for university examinations	5.5	3.64	20.00	40.0	30.9
15	Punctuality to the class	1.8	6.36	20.91	28.2	42.7
16	Enthusiasm shown to encourage and guide students in extracurricular activities like cultural, community services nation building etc.	5.5	6.36	22.73	41.8	23.6
17	Counseling and career guidance	5.5	5.45	17.27	35.5	36.4
18	Accessibility of the lecturer outside the classroom for academic interaction	7.3	4.55	17.27	40.9	30.0
19	Personal care and affection while dealing with individual students and helping students	4.5	4.55	19.09	31.8	40.0
20	Overall opinion on the lecturer	3.6	6.36	10.91	34.5	44.5
	Grand Total	4.9	5.36	18.09	36.2	35.5

Query-wise Response of Students



Averages of Student Response:



Teacher-wise feedback analysis is herewith provided to the teachers in a separate sheet. Teachers are requested to take note of the feedback, identify gaps if any and initiate appropriate steps to improve quality of Teaching Learning Process.

S.No	Year	Name of the Teacher	Designation
1	Dr. T.Patanjali	Associate Prof of Telugu	
2	P.Krishna Murthy	Associate Prof of Commerce	
3	R.Swarnalatha	Asst. Prof of Botany	
4	M.Praveena	Asst. Prof of English	
5	M.Pranitha	Asst. Prof of Zoology	
6	S.Krishnaiah	Asst. Prof of History	
7	K.Srinivas	Asst. Prof of Economics	
8	Dr.N.Yogibabu	Asst. Prof of Chemistry	
9	N.Saidamma	Lecturer in Political Science	
10	J.Sravan Kumar	Lecturer in Mathematics	
11	A.Sumalatha	Lecturer in Physics	

**GOVERNMENT DEGREE COLLEGE, PATANCHERU,
DISTRICT SANGAREDDY, TELANGANA STATE**

Internal Quality Assurance Cell (IQAC)

Providing Teacher-wise Feedback Analysis 2018-19:

As you are aware that the Internal Quality Assurance Cell (IQAC) has been established with the objective to institutionalize quality processes to sustain and enhance quality of education. IQAC is mandated to institutionalize quality processes keeping in view the criteria prescribed by National Assessment and Accreditation Council (NAAC). In pursuit of its responsibilities, IQAC takes feedback from students on teachers and analyses the feedback and provides inputs to the teachers.

The student feedback for the feedback is obtained from the students. The feedback is taken in the form of student response to questionnaire of a five point scale ranging from poor to excellent. The questionnaire comprises twenty questions reflecting teacher performance in respect of various aspects of Teaching, Learning and Evaluation process.

AVERAGES OF QUERY-WISE RESPONSE FROM STUDENTS' FEEDBACK FOR THE YEAR 2018-19:

S.No	Query	Poor	Average	Good	Very Good	Excellent
1	Efforts to effectively cover 100% syllabus	5.5	4.55	6.36	38.2	45.5
2	The interest generated in the students while teaching in the class room	7.3	3.64	16.36	38.2	34.5
3	Clarity of expression while teaching the topic/lesson	3.6	8.18	20.00	28.2	40.0
4	Depth of subject content explained	3.6	3.64	15.45	37.3	40.0
5	Level of latest developments in the subject taught	2.7	7.21	21.62	35.1	33.3
6	Use of other methods of teaching like class seminar question answer group discussion etc., in the class room	3.7	4.59	22.94	36.7	32.1
7	Encouraging questions in the topic in the class and clearing doubts	5.5	1.82	25.45	34.5	32.7
8	Use of teaching models and teaching aids in the class room	6.4	1.82	21.82	40.0	30.0

S.No	Query	Poor	Average	Good	Very Good	Excellent
9	Encouraging and supervising the students for study projects	3.6	7.27	17.27	35.5	36.4
10	Aptitude shown in arranging field visits, invited lectures etc., in the subject	4.5	6.36	12.73	44.5	31.8

11	Encouraging and guiding students in reading library (subject and general) books and using internet	6.4	8.18	16.36	33.6	35.5
12	Encouraging and guiding students in giving class seminars	4.5	7.27	15.45	39.1	33.6
13	Regularity and seriousness in valuing the answer scripts of monthly tests and discussing the same with the students	6.4	5.45	21.82	30.9	35.5
14	Remedial coaching and efforts made in preparing the students for university examinations	5.5	3.64	20.00	40.0	30.9
15	Punctuality to the class	1.8	6.36	20.91	28.2	42.7
16	Enthusiasm shown to encourage and guide students in extracurricular activities like cultural, community services nation building etc.	5.5	6.36	22.73	41.8	23.6
17	Counseling and career guidance	5.5	5.45	17.27	35.5	36.4
18	Accessibility of the lecturer outside the classroom for academic interaction	7.3	4.55	17.27	40.9	30.0
19	Personal care and affection while dealing with individual students and helping students	4.5	4.55	19.09	31.8	40.0
20	Overall opinion on the lecturer	3.6	6.36	10.91	34.5	44.5
	Grand Total	4.9	5.36	18.09	36.2	35.5

Query-wise Response of Students

Averages of Student Response:

Teacher-wise feedback analysis is herewith provided to the teachers in a separate sheet. Teachers are requested to take note of the feedback, identify gaps if any and initiate appropriate steps to improve quality of Teaching Learning Process.

S.No	Name of the Lecturer	Designation	Signature
------	----------------------	-------------	-----------

1	B. Rajender Kumar	Asso. Prof In Mathematics	
2	M.Chandrasekhar	Lect. In Librarian Science	
3	DR. M. Shailaja	Lect. In English	
4	T.Allam Reddy	Lect. In Commerce	
5	Nazeeruddin	Lect. In Chemistry	
6	K.Srinivas	Asst. Prof of Economics	
7	Dr.N.Yogi Babu	Asst. Prof of Chemistry	
8	A.J. Harish Kumar	Asst. Prof of English	
9	Dr.B. Lachaiah	Asst. Prof of Telugu	
10	Sri Hari Reddy Devariniti	Asst. Prof of Botany	
11	M.Veerender	Asst. Prof of Commerce	
12	G.N.Radhika	Asst. Prof of Zoology	
13	R.H.Arththur	Asst. Prof of Physics	
14	Dr.L. Raji Reddy	Asst. Proof In Commerce	
15	Ravindar Kapuganti	Asst. Prof of Commerce	
16	Dr.G Srinivasa Rao	Asst. Prof of Telugu	
17	Dr.K. Bhaskar	Asst. Prof of Political Science	
18	Dr.N.Jana Reddy	Asst. Prof of History	
19	K.Saroja	Lecturer in Maths	
20	B.Sruthi	Guest Lect. In Mathematics	
21	G. Madhu Mohan Reddy	Guest Lect. In Physics	
22	J.Chaitanya	Guest Lect. In Computer Science	
23	Rekha Bai	Guest Lect. In Computer Science	

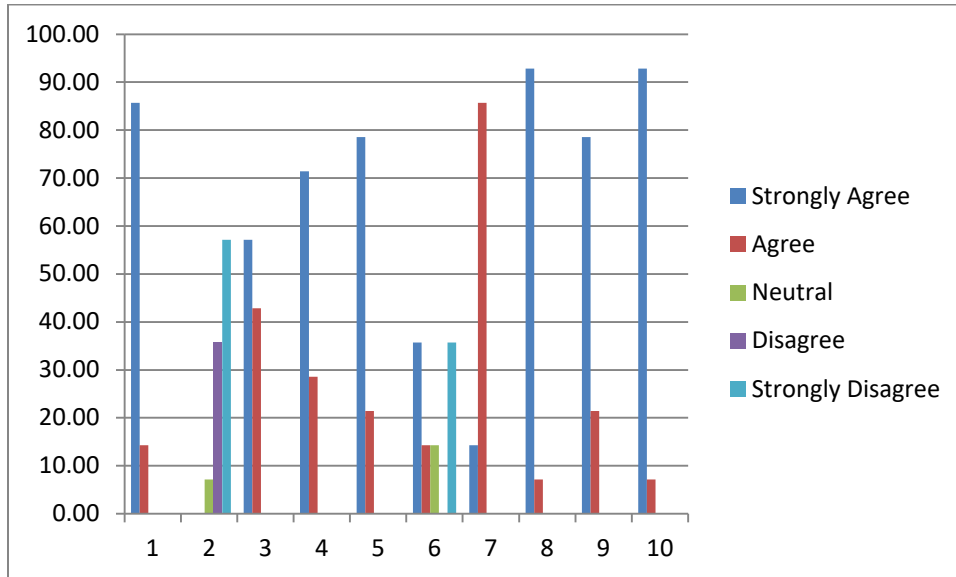
**Government Degree College, Patancheru,
Disrict: Sangareddy, Telangana State**

The institution collects feedback from teachers on various aspects relating to institution including infrastructure, administration, process of curriculum transaction etc.,. The feedback is given by teachers as response to ten queries on a five point scale ranging from strongly disagree to strongly agree. The feedback is analysed and recorded. The summary of feedback is given below.

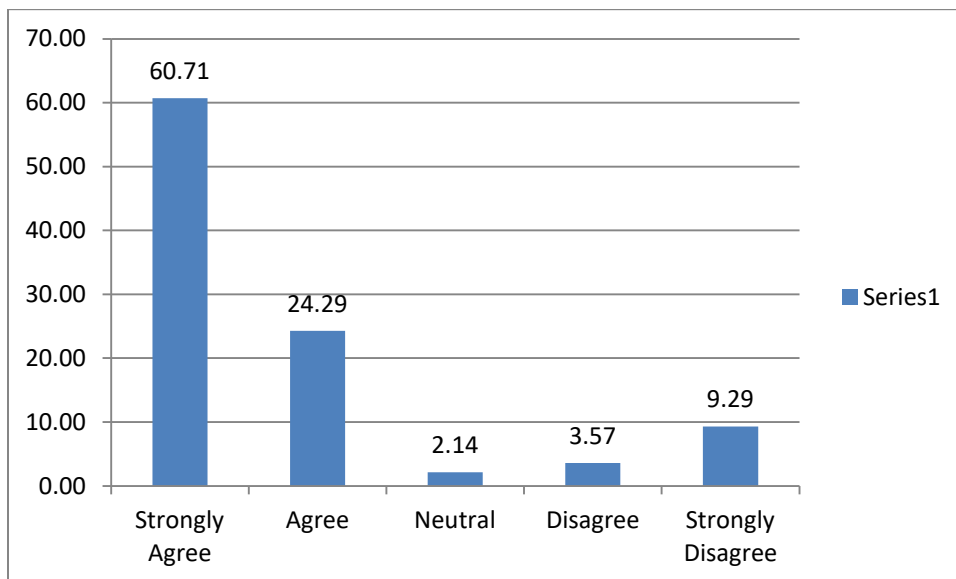
Summary of Feedback from Teachers 2016-17

	Query	Strongly Agree	Agree	Neutral	Disagree	Strongly Disagree
1	College administration facilitates teachers perform their role effectively	85.71	14.29	0.00	0.00	0.00
2	The college has infrastructure sufficient enough for effective transaction of curriculum	0.00	0.00	7.14	35.71	57.14
3	The college premises are maintained hygienically	57.14	42.86	0.00	0.00	0.00
4	The college attends all service related issues promptly	71.43	28.57	0.00	0.00	0.00
5	The institution planning is effective and hence enables teacher conduct all activities smoothly and effectively	78.57	21.43	0.00	0.00	0.00
6	The curriculum is consistently updated to make it relevant	35.71	14.29	14.29	0.00	35.71
7	The college administration encourages teachers to undertake research and extension activities	14.29	85.71	0.00	0.00	0.00
8	The college online web-based admission process through Degree Online Services for Telangana (DOST) is effective and enabled acquiring quality input	92.86	7.14	0.00	0.00	0.00
9	The college administration provides service provisions to teachers such as leaves as per service rules	78.57	21.43	0.00	0.00	0.00
10	Working in GDC, Patancheru is a pleasurable experience	92.86	7.14	0.00	0.00	0.00
	Total	60.71	24.29	2.14	3.57	9.29

Query- wise averages of feedback in percentages



Overall average of feedback in Percentage



**Government Degree College, Patancheru,
Disrict: Sangareddy, Telangana State**

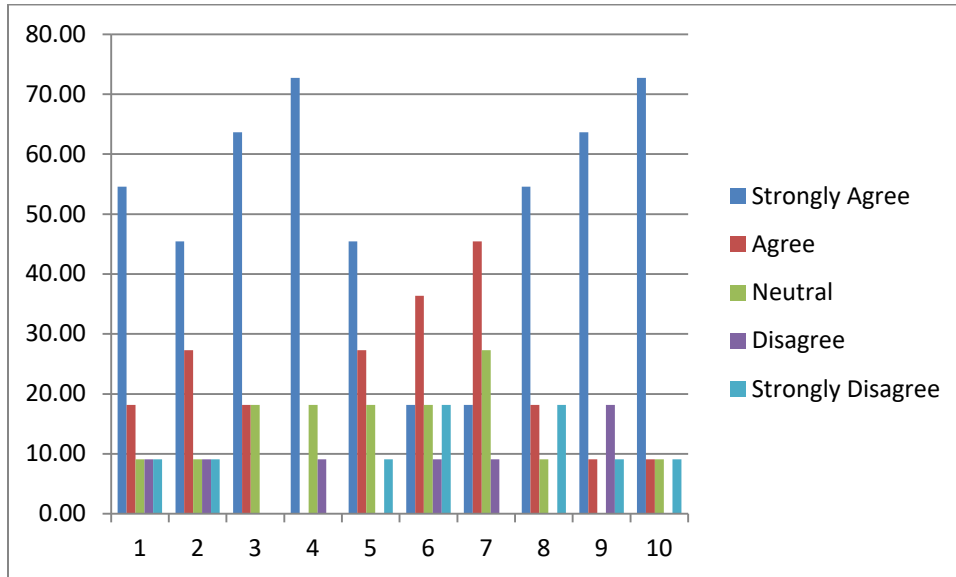
The institution collects feedback from teachers on various aspects relating to institution including infrastructure, administration, process of curriculum transaction etc.,. The feedback is given by

teachers as response to ten queries on a five point scale ranging from strongly disagree to strongly agree. The feedback is analysed and recorded. The summary of feedback is given below.

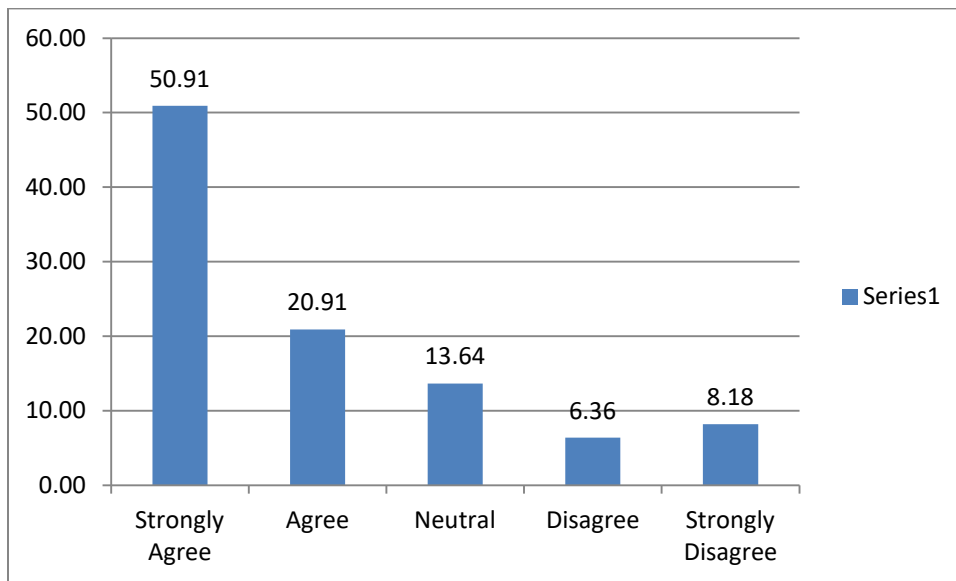
Summary of Feedback from Teachers 2017-18

S.No	Query	Strongly Agree	Agree	Neutral	Disagree	Strongly Disagree
1	College administration facilitates teachers perform their role effectively	54.55	18.18	9.09	9.09	9.09
2	The college has infrastructure sufficient enough for effective transaction of curriculum	45.45	27.27	9.09	9.09	9.09
3	The college premises are maintained hygienically	63.64	18.18	18.18	0.00	0.00
4	The college attends all service related issues promptly	72.73	0.00	18.18	9.09	0.00
5	The institution planning is effective and hence enables teacher conduct all activities smoothly and effectively	45.45	27.27	18.18	0.00	9.09
6	The curriculum is consistently updated to make it relevant	18.18	36.36	18.18	9.09	18.18
7	The college administration encourages teachers to undertake research and extension activities	18.18	45.45	27.27	9.09	0.00
8	The college online web-based admission process through Degree Online Services for Telangana (DOST) is effective and enabled acquiring quality input	54.55	18.18	9.09	0.00	18.18
9	The college administration provides service provisions to teachers such as leaves as per service rules	63.64	9.09	0.00	18.18	9.09
10	Working in GDC, Patancheru is a pleasurable experience	72.73	9.09	9.09	0.00	9.09
	Total	50.91	20.91	13.64	6.36	8.18

Query- wise averages of feedback in percentages



Overall average of feedback in Percentage



**Government Degree College, Patancheru,
Disrict: Sangareddy, Telangana State**

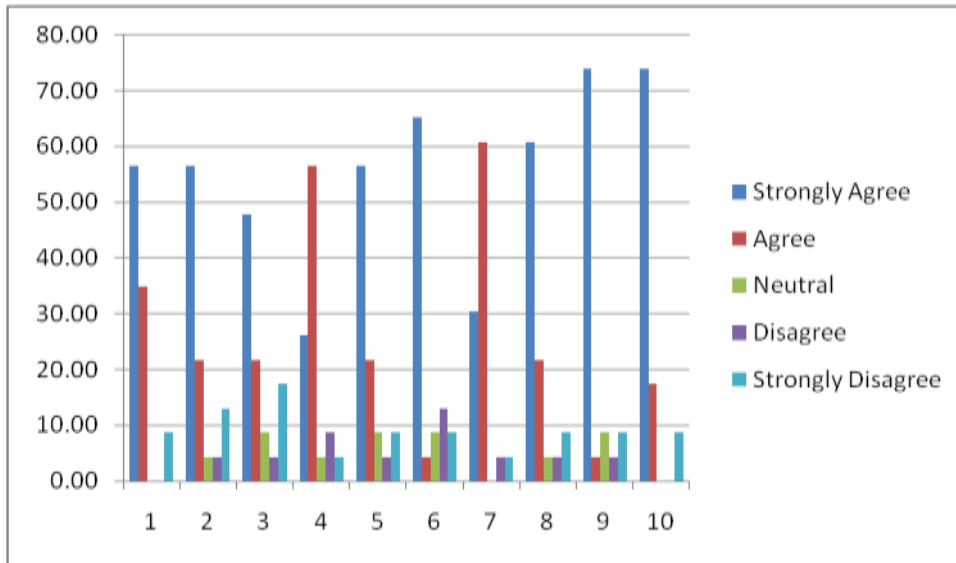
The institution collects feedback from teachers on various aspects relating to institution including infrastructure, administration, process of curriculum transaction etc.,. The feedback is given by teachers as response to ten queries on a five point scale ranging from strongly disagree to strongly agree. The feedback is analysed and recorded. The summary of feedback is given below.

Summary of Feedback from Teachers 2018-19

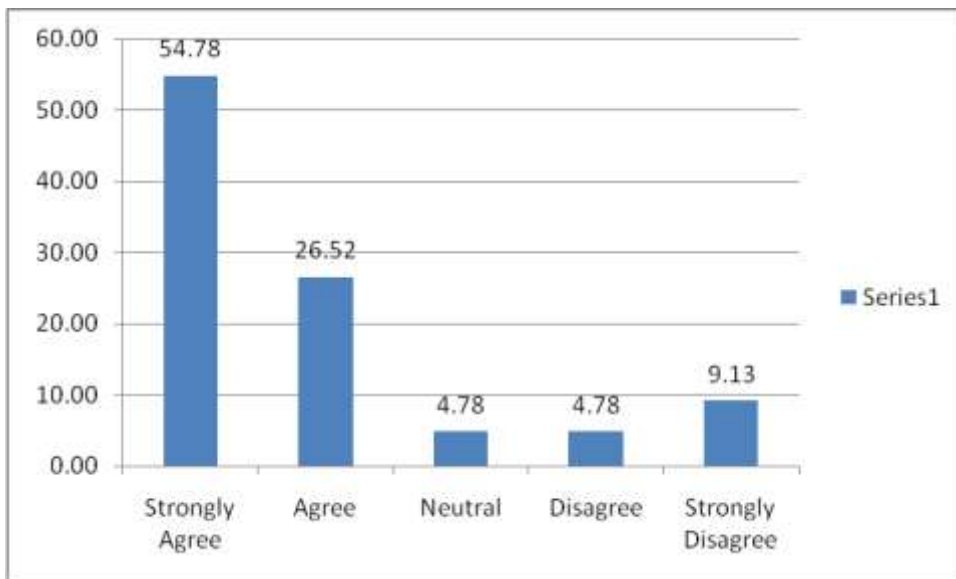
S.No	Query	Percentage				
		Strongly Agree	Agree	Neutral	Disagree	Strongly Disagree
1	College administration facilitates teachers perform their role effectively	56.52	34.78	0.00	0.00	8.70
2	The college has infrastructure sufficient enough for effective transaction of curriculum	56.52	21.74	4.35	4.35	13.04
3	The college premises are maintained hygienically	47.83	21.74	8.70	4.35	17.39
4	The college attends all service related issues promptly	26.09	56.52	4.35	8.70	4.35
5	The institution planning is effective and hence enables teacher conduct all activities smoothly and effectively	56.52	21.74	8.70	4.35	8.70
6	The curriculum is consistently updated to make it relevant	65.22	4.35	8.70	13.04	8.70
7	The college administration encourages teachers to undertake research and extension activities	30.43	60.87	0.00	4.35	4.35

S.No	Query	Percentage				
		Strongly Agree	Agree	Neutral	Disagree	Strongly Disagree
8	The college online web-based admission process through Degree Online Services for Telangana (DOST) is effective and enabled acquiring quality input	60.87	21.74	4.35	4.35	8.70
9	The college administration provides service provisions to teachers such as leaves as per service rules	73.91	4.35	8.70	4.35	8.70
10	Working in GDC, Patancheru is a pleasurable experience	73.91	17.39	0.00	0.00	8.70
	Total	54.78	26.52	4.78	4.78	9.13

Query- wise averages of feedback in percentages



Overall average of feedback in Percentage



Disrict: Sangareddy, Telangana State

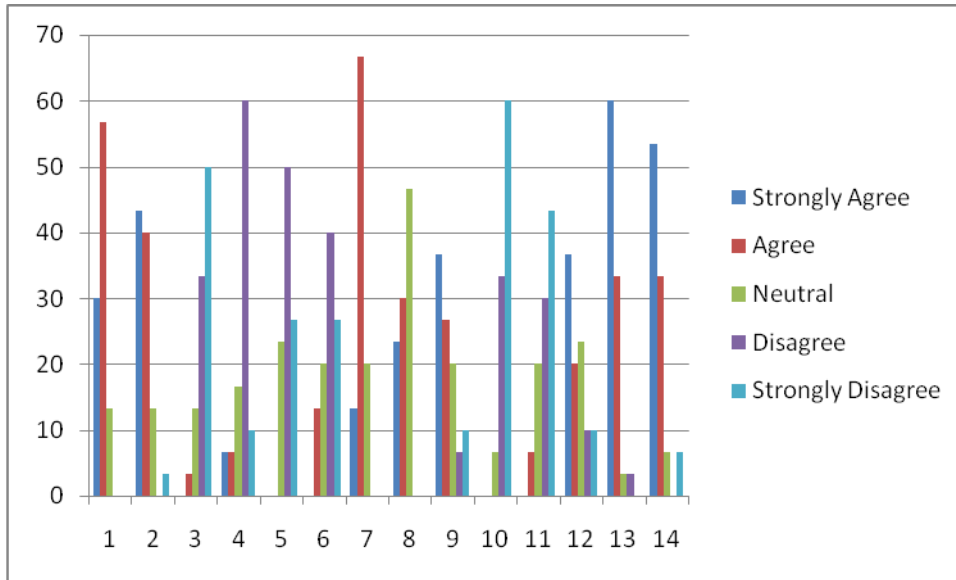
The institution collects feedback from students on various aspects relating to infrastructure of the institution including, Laboratories, sports facilities, process of admission etc.,. The feedback is given by student as response to fourteen queries on a five point scale ranging from strongly disagree to strongly agree. The feedback is analysed and used as input for improvement of quality of education.

Summary of feedback from students on Infrastructure 2016-17

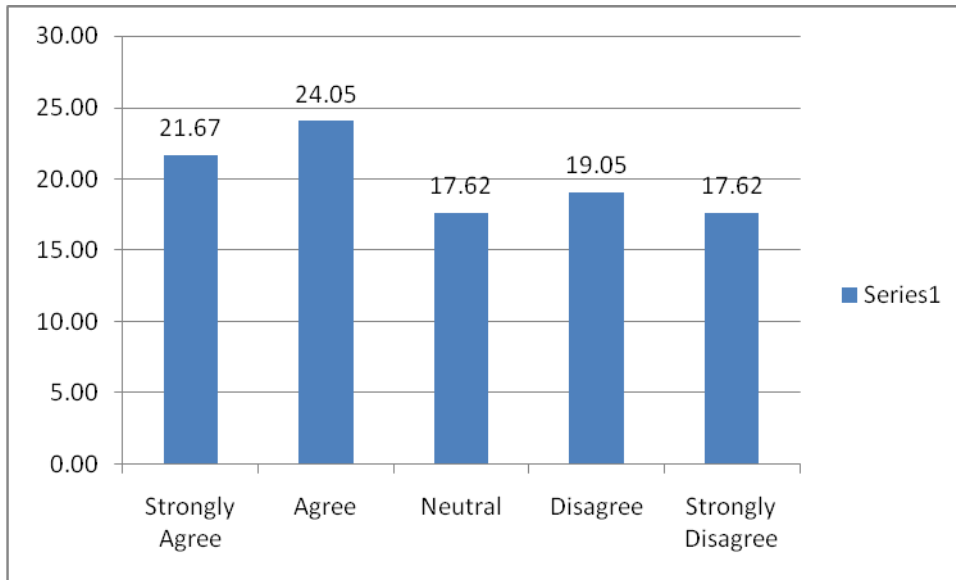
S.No	Query	Percentage				
		Strongly Agree	Agree	Neutral	Disagree	Strongly Disagree
1	The admission process conducted through DOST Website is transparent and student friendly?	30	56.67	13.33	0.00	0.00
2	Admission process enabled students secure admission into the course/programme of his/her choice?	43.33	40.00	13.33	0.00	3.33
3	The college has sufficient number of classrooms for effective curriculum transaction	0.00	3.33	13.33	33.33	50.00
4	The college provided requisite facilities such as toilets rest room	6.67	6.67	16.67	60.00	10.00
5	The college has well equipped laboratories for conduct of practicals	0.00	0.00	23.33	50.00	26.67
6	The college has ICT enabled learning infrastructure such as Digital classrooms, Mana Tv and Virtual Classrooms	0.00	13.33	20.00	40.00	26.67
7	The college imparts skill oriented training to enhance employability of students	13.33	66.67	20.00	0.00	0.00
8	The college provides platform for showcasing literary and cultural talents of students	23.33	30.00	46.67	0.00	0.00
9	The college has access to play ground and other sports infrastructure	36.67	26.67	20.00	6.67	10.00

S.No	Query	Strongly Agree	Agree	Neutral	Disagree	Strongly Disagree
10	The college has a separate library along with reading room	0.00	0.00	6.67	33.33	60.00
11	The Library has sufficient number of text and reference books	0.00	6.67	20.00	30.00	43.33
12	The college provides internet facility and enables students access digital content	36.67	20.00	23.33	10.00	10.00
13	The staff including teaching and non-teaching are courteous towards students	60.00	33.33	3.33	3.33	0.00
14	On the whole the college provides the best education in this area	53.33	33.33	6.67	0.00	6.67
	Total	21.67	24.05	17.62	19.05	17.62

Query- wise averages of feedback in percentages



Overall average of feedback in Percentage



**Government Degree College, Patancheru,
Disrict: Sangareddy, Telangana State**

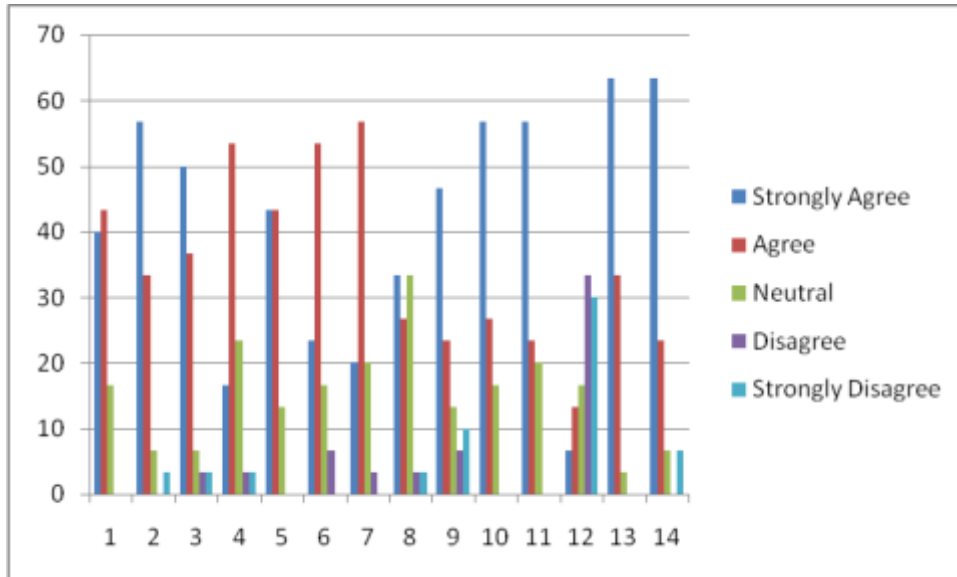
The institution collects feedback from students on various aspects relating to infrastructure of the institution including, Laboratories, sports facilities, process of admission etc.,. The feedback is given by student as response to fourteen queries on a five point scale ranging from strongly disagree to strongly agree. The feedback is analysed and used as input for improvement of quality of education.

Summary of feedback from students on infrastructure 2017-18

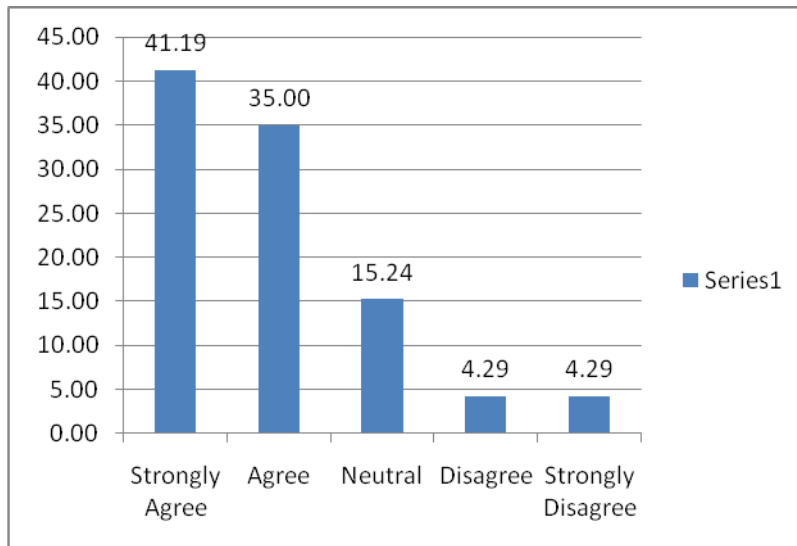
S.No	Query	Percentage				
		Strongly Agree	Agree	Neutral	Disagree	Strongly Disagree
1	The admission process conducted through DOST Website is transparent and student friendly?	40	43.33	16.67	0.00	0.00
2	Admission process enabled students secure admission into the course/programme of his/her choice?	56.67	33.33	6.67	0.00	3.33
3	The college has sufficient number of classrooms for effective curriculum transaction	50.00	36.67	6.67	3.33	3.33
4	The college provided requisite facilities such as toilets rest room	16.67	53.33	23.33	3.33	3.33
5	The college has well equipped laboratories for conduct of practicals	43.33	43.33	13.33	0.00	0.00
6	The college has ICT enabled learning infrastructure such as Digital classrooms, Mana Tv and Virtual Classrooms	23.33	53.33	16.67	6.67	0.00
7	The college imparts skill oriented training to enhance employability of students	20.00	56.67	20.00	3.33	0.00
8	The college provides platform for showcasing literary and cultural talents of students	33.33	26.67	33.33	3.33	3.33
9	The college has access to play ground and other sports infrastructure	46.67	23.33	13.33	6.67	10.00

S.No	Query	Strongly Agree	Agree	Neutral	Disagree	Strongly Disagree
10	The college has a separate library along with reading room	56.67	26.67	16.67	0.00	0.00
11	The Library has sufficient number of text and reference books	56.67	23.33	20.00	0.00	0.00
12	The college provides internet facility and enables students access digital content	6.67	13.33	16.67	33.33	30.00
13	The staff including teaching and non-teaching are courteous towards students	63.33	33.33	3.33	0.00	0.00
14	On the whole the college provides the best education in this area	63.33	23.33	6.67	0.00	6.67
	Total	41.19	35.00	15.24	4.29	4.29

Query- wise averages of feedback in percentages



Overall average of feedback in Percentage



**Government Degree College, Patancheru,
Disrict: Sangareddy, Telangana State**

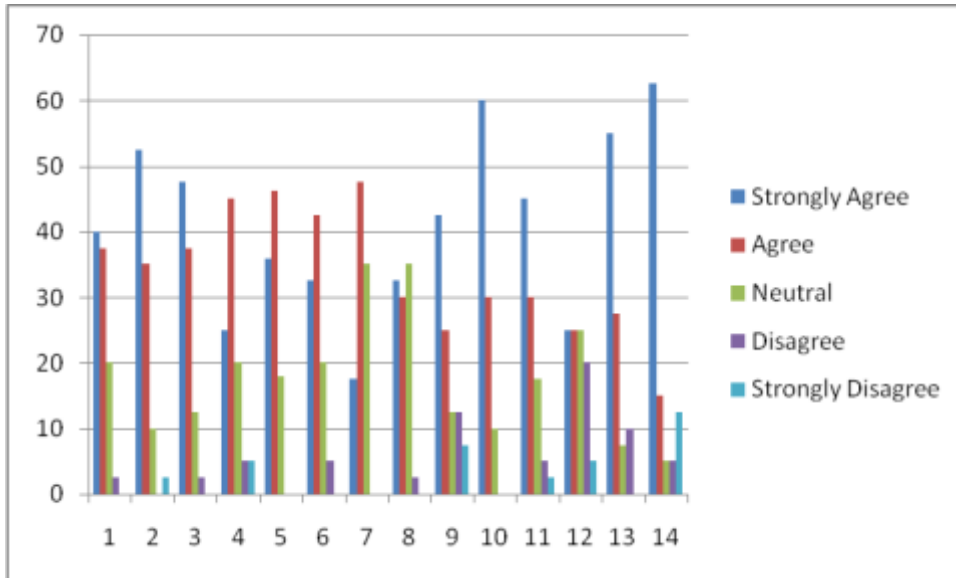
The institution collects feedback from students on various aspects relating to infrastructure of the institution including, Laboratories, sports facilities, process of admission etc.,. The feedback is given by student as response to fourteen queries on a five point scale ranging from strongly disagree to strongly agree. The feedback is analysed and used as input for improvement of quality of education.

Summary of feedback from students on infrastructure 2018-19

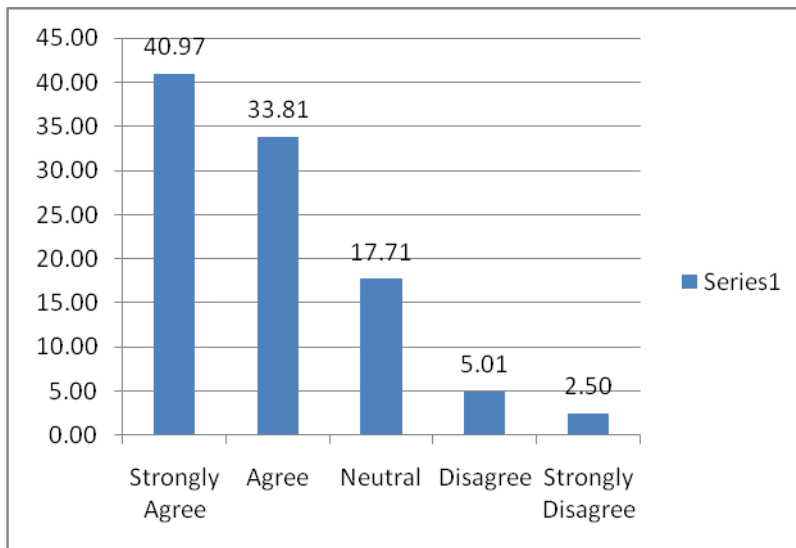
S.No	Query	Percentage				
		Strongly Agree	Agree	Neutral	Disagree	Strongly Disagree
1	The admission process conducted through DOST Website is transparent and student friendly?	40	37.50	20.00	2.50	0.00
2	Admission process enabled students secure admission into the course/programme of his/her choice?	52.50	35.00	10.00	0.00	2.50
3	The college has sufficient number of classrooms for effective curriculum transaction	47.50	37.50	12.50	2.50	0.00
4	The college provided requisite facilities such as toilets rest room	25.00	45.00	20.00	5.00	5.00
5	The college has well equipped laboratories for conduct of practicals	35.90	46.15	17.95	0.00	0.00
6	The college has ICT enabled learning infrastructure such as Digital classrooms, Mana Tv and Virtual Classrooms	32.50	42.50	20.00	5.00	0.00
7	The college imparts skill oriented training to enhance employability of students	17.50	47.50	35.00	0.00	0.00
8	The college provides platform for showcasing literary and cultural talents of students	32.50	30.00	35.00	2.50	0.00
9	The college has access to play ground and other sports infrastructure	42.50	25.00	12.50	12.50	7.50

S.No	Query	Percentage				
		Strongly Agree	Agree	Neutral	Disagree	Strongly Disagree
10	The college has a separate library along with reading room	60.00	30.00	10.00	0.00	0.00
11	The Library has sufficient number of text and reference books	45.00	30.00	17.50	5.00	2.50
12	The college provides internet facility and enables students access digital content	25.00	25.00	25.00	20.00	5.00
13	The staff including teaching and non-teaching are courteous towards students	55.00	27.50	7.50	10.00	0.00
14	On the whole the college provides the best education in this area	62.50	15.00	5.00	5.00	12.50
	Total	40.97	33.81	17.71	5.01	2.50

Query- wise averages of feedback in percentages



Overall average of feedback in Percentage



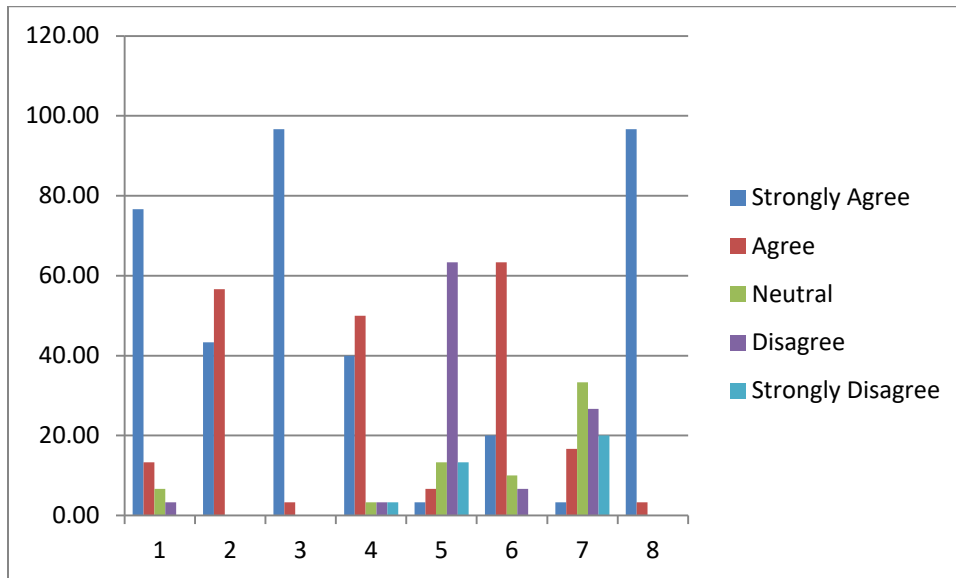
**Government Degree College, Patancheru,
Disrict: Sangareddy, Telangana State**

The institution collects feedback from Alumni on various aspects relating to institution including infrastructure, administration, process of curriculum transaction etc.,. The feedback is given by alumni as response to eight queries on a five point scale ranging from strongly disagree to strongly agree. The feedback is analysed and used as input for improvement of quality of education.

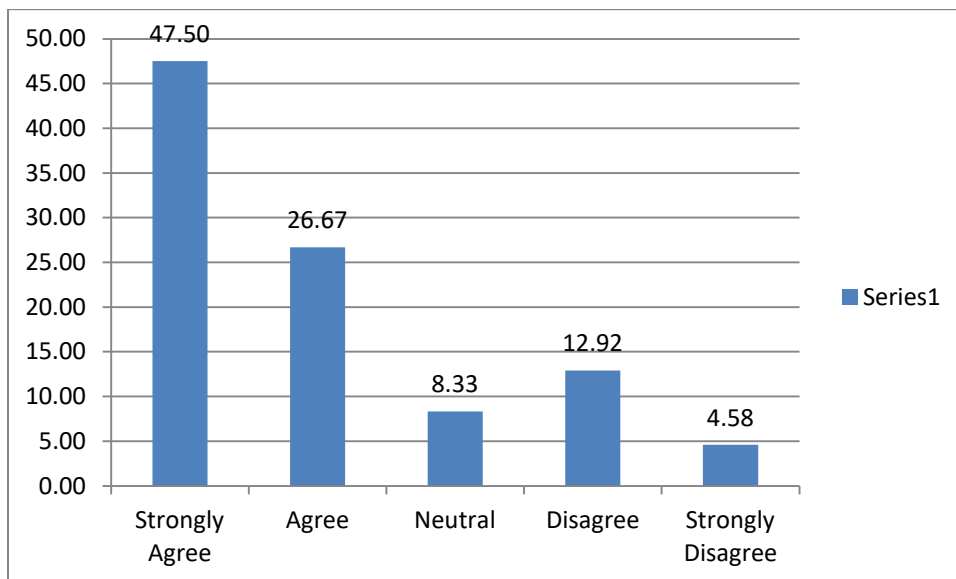
Summary of Feedback from Alumni 2016-17

S.No	Query	Strongly Agree	Agree	Neutral	Disagree	Strongly Disagree
1	I feel proud to be a student of GDC, Patancheru	76.67	13.33	6.67	3.33	0.00
2	The learning I had is useful in career	43.33	56.67	0.00	0.00	0.00
3	The developments in the college in the recent years are appreciative	96.67	3.33	0.00	0.00	0.00
4	The new courses introduced are relevant to the contemporary needs	40.00	50.00	3.33	3.33	3.33
5	GDC, Patancheru is involving alumni in its activities	3.33	6.67	13.33	63.33	13.33
6	The alumni have a role to play in academically strengthening the college further	20.00	63.33	10.00	6.67	0.00
7	The alumni have a role to play in financially strengthening the college further	3.33	16.67	33.33	26.67	20.00
8	The department should take initiative to enrol and strengthen the alumni association	96.67	3.33	0.00	0.00	0.00
	Total	47.50	26.67	8.33	12.92	4.58

Query- wise averages of feedback in percentages



Overall average of feedback in Percentage



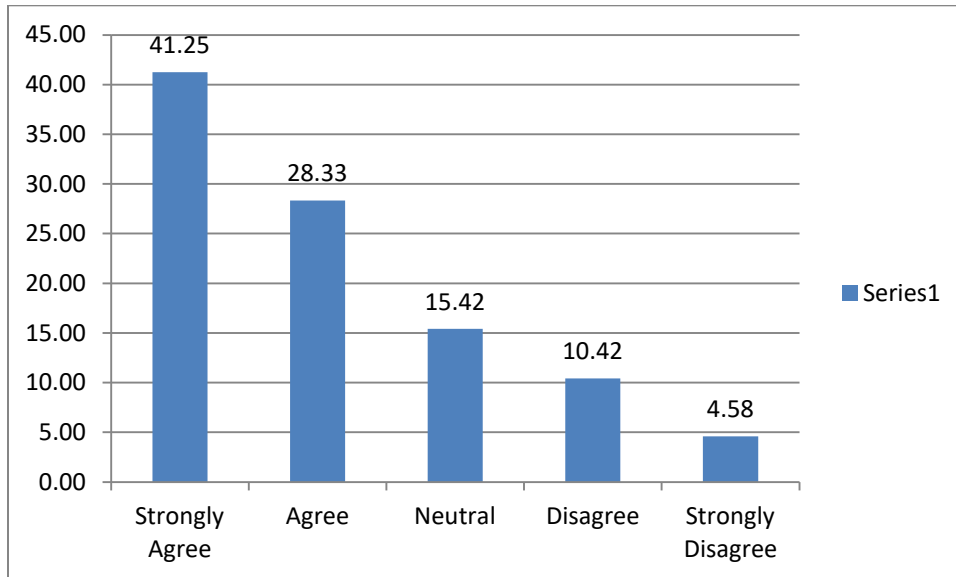
**Government Degree College, Patancheru,
Disrict: Sangareddy, Telangana State**

The institution collects feedback from Alumni on various aspects relating to institution including infrastructure, administration, process of curriculum transaction etc.,. The feedback is given by alumni as response to eight queries on a five point scale ranging from strongly disagree to strongly agree. The feedback is analysed and used as input for improvement of quality of education.

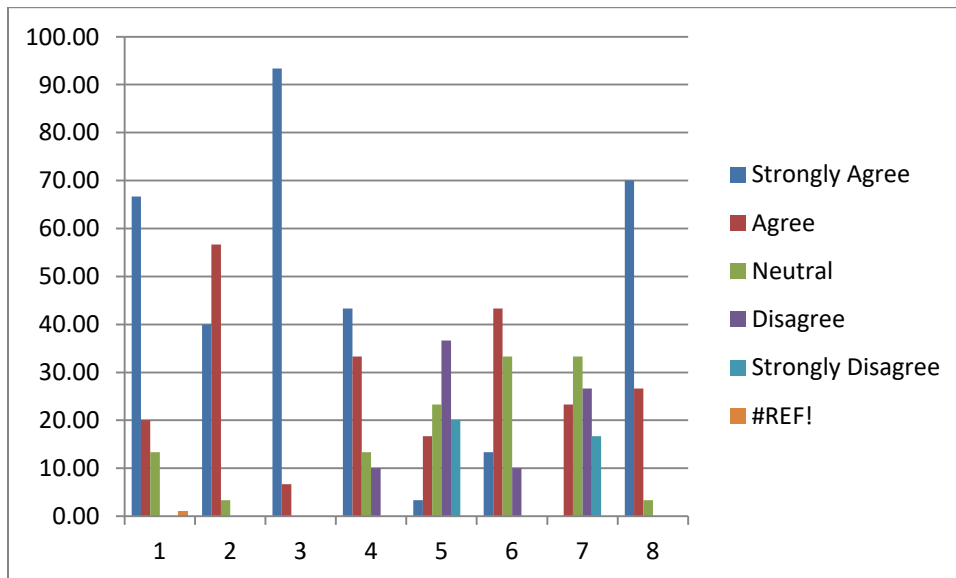
Summary of feedback from Alumni 2017-18

S.No	Query	Percentage				
		Strongly Agree	Agree	Neutral	Disagree	Strongly Disagree
1	I feel proud to be a student of GDC, Patancheru	66.67	20.00	13.33	0.00	0.00
2	The learning I had is useful in career	40.00	56.67	3.33	0.00	0.00
3	The developments in the college in the recent years are appreciative	93.33	6.67	0.00	0.00	0.00
4	The new courses introduced are relevant to the contemporary needs	43.33	33.33	13.33	10.00	0.00
5	GDC, Patancheru is involving alumni in its activities	3.33	16.67	23.33	36.67	20.00
6	The alumni have a role to play in academically strengthening the college further	13.33	43.33	33.33	10.00	0.00
7	The alumni have a role to play in financially strengthening the college further	0.00	23.33	33.33	26.67	16.67
8	The department should take initiative to enrol and strengthen the alumni association	70.00	26.67	3.33	0.00	0.00
	Total	41.25	28.33	15.42	10.42	4.58

Query- wise averages of feedback in percentages



Overall average of feedback in Percentage



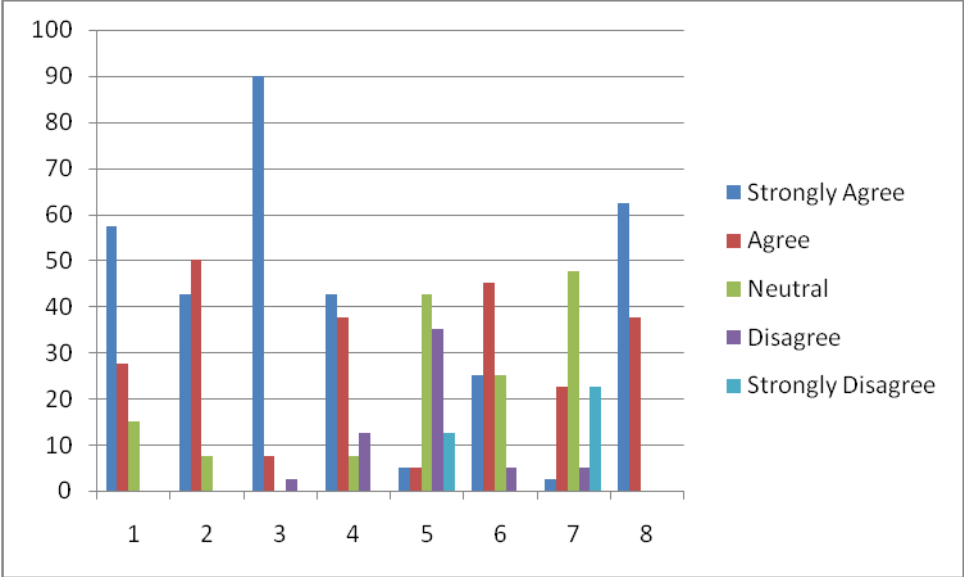
**Government Degree College, Patancheru,
Disrict: Sangareddy, Telangana State**

The institution collects feedback from Alumni on various aspects relating to institution including infrastructure, administration, process of curriculum transaction etc.,. The feedback is given by alumni as response to eight queries on a five point scale ranging from strongly disagree to strongly agree. The feebak is analysed and used as input for improvement of quality of education.

Summary of feedback from Alumni 2018-19

S.No	Query	Strongly Agree	Agree	Neutral	Disagree	Strongly Disagree
1	I feel proud to be a student of GDC, Patancheru	57.5	27.5	15	0	0
2	The learning I had is useful in career	42.5	50	7.5	0	0
3	The developments in the college in the recent years are appreciative	90	7.5	0	2.5	0
4	The new courses introduced are relevant to the contemporary needs	42.5	37.5	7.5	12.5	0
5	GDC, Patancheru is involving alumni in its activities	5	5	42.5	35	12.5
6	The alumni have a role to play in academically strengthening the college further	25	45	25	5	0
7	The alumni have a role to play in financially strengthening the college further	2.5	22.5	47.5	5	22.5
8	The department should take initiative to enrol and strengthen the alumni association	62.5	37.5	0	0	0
	Total	40.94	29.06	18.13	7.50	4.38

Query- wise averages of feedback in percentages



Overall average of feedback in Percentage

